

Instruction Manual

LORUS

CAL. VD53 (RT3 SERIES)

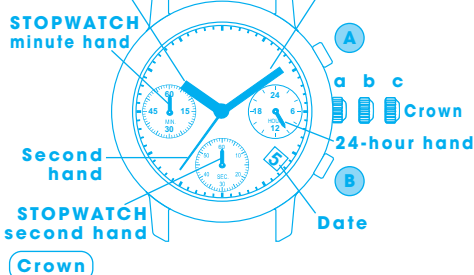
LORUS

■ CHARACTERISTICS

CALIBER OF THREE HANDS WITH THREE EYES (MINUTES, CHRONOGRAPH & 24-HOUR INDICATOR)

- 1. Time:** Indicated by the hour, minute and second hands.
- 2. Date:** Displayed in numerals.
- 3. Stopwatch:** Measures up to 60 minutes in one-second increments.

■ DISPLAY AND CROWN/BUTTONS



Crown

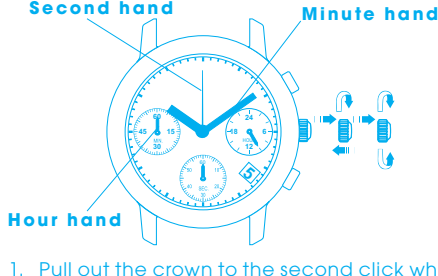
- a. Normal position: Free
- b. First click : Date setting
- c. Second click : Time setting
Adjusting the stopwatch hand position

■ SETTING THE TIME AND ADJUSTING THE STOPWATCH HAND POSITION

- This watch is so designed that
 - 1) time setting and
 - 2) stopwatch hand position adjustment
 are both made with the crown at the second click position. Once the crown is pulled out to the second click, be sure to make the above adjustments at the same time.

1) Time setting

- Before setting the time, check that the stopwatch measurement is stopped.



- Pull out the crown to the second click when the second hand is at the 12 o'clock position. The second hand will stop on the spot.
- Turn the crown to set the hour and minute hands.
- Push the crown back in to the normal position in accordance with a time signal.

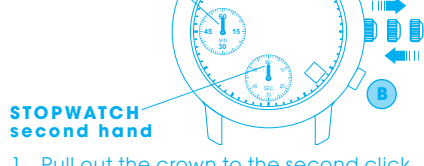
Notes:

- Do not press any button when the crown is at the second click position, as this will move the STOPWATCH hands.
- When the time is set, the 24-hour hand move correspondingly with the hour and minute hands.
- When setting the hour hand, check that the 24-hour hand is correctly set.
- When setting the minute hand, first advance it 4 to 5 minutes ahead of the desired time and then turn it back to the exact minute.

2) Stopwatch hand position adjustment

- Before setting the time, be sure to check that the STOPWATCH hands are in the "0" position when the stopwatch is reset. (To reset the stopwatch, see the "STOPWATCH" section.)

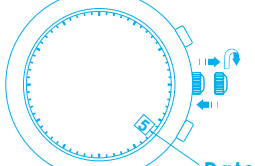
* If either of the STOPWATCH hands is not at the "0" position, reset them, following the procedure below.



- Pull out the crown to the second click.
- Press Button A or B to reset the STOPWATCH second and minute hands to the "0" position.
 - Button A: The hands move counterclockwise.
 - Button B: The hands move clockwise.
- Push the crown back in to the normal position.

■ SETTING THE DATE

- It is necessary to adjust the date at the end of February and 30-day months.



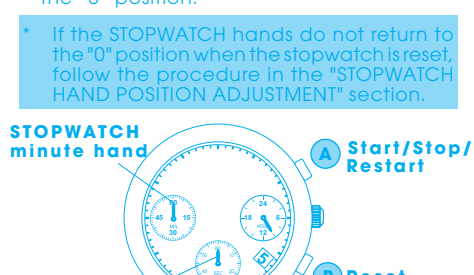
- Pull out the crown to the first click.
- Turn the crown clockwise until the desired date appears.
- Push the crown back in to the normal position.

Note: Do not set the date between 9:00 p.m. and 1:00 a.m., as the date may not change properly. If it is necessary to set the date during that period of time, first change the time to any time outside of this period, set the date, and then reset to the correct time.

■ STOPWATCH

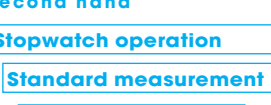
- The stopwatch can measure up to 60 minutes in one-second increments.
- The measured time is indicated by the STOPWATCH hands that move independently of the hour, minute and 24-hour hands.
- Before using the stopwatch, be sure to check that the crown is set at the normal position and that the STOPWATCH hands are reset to the "0" position.

* If the STOPWATCH hands do not return to the "0" position when the stopwatch is reset, follow the procedure in the "STOPWATCH HAND POSITION ADJUSTMENT" section.



Stopwatch operation

Standard measurement



Accumulated elapsed time measurement



* Restart and stop of the stopwatch can be repeated by pressing Button A.

Split time measurement



* Measurement and release of split time can be repeated by pressing Button B.

■ LUMIBRITE WATCH

- ❖ If your watch is a LORUS LUMIBRITE watch, it has following features.

LORUS LUMIBRITE watches absorb and store light energy from natural and artificial light sources and emit light in the dark. They are made of environmentally friendly material, and therefore, are harmless to human beings and the environment.

- With a full charge, LORUS LUMIBRITE watches glow in the dark hours longer than conventional luminous watches of this type. If exposed to a light of more than 500 lux (i.e., the brightness of a typical office) for approximately 10 minutes, or direct sunlight for 2 minutes, they will glow for hours.
- Since LORUS LUMIBRITE watches emit the light they store, the brightness will decrease gradually over time. The length of time they will glow may also differ slightly depending on such factors as the brightness of and distance from the light source used to charge the watch.

■ BATTERY CHANGE

The battery SR920SW, which powers your watch, should last approximately 2 years. However, because it is inserted at the factory, the actual life of the battery once in your possession may be less than the specified period.

Be sure to replace the battery to prevent any possible malfunction as soon as it runs down.

Note:

1. If the stopwatch is used for more than 2 hours a day, the battery life may be less than the specified period.
2. After the battery is replaced with a new one, set the time/calendar and adjust the stopwatch hand position.

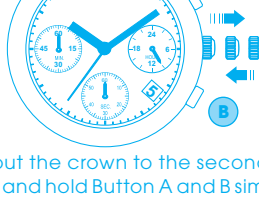
● Battery life indicator

- When the battery nears its end, the small second hand moves at two-second intervals instead of normal one-second intervals. In that case, have the battery replaced with a new one as soon as possible.

- The watch remains accurate, however, while the small second hand is moving at two-second intervals.

● Necessary procedure after battery change

After the battery is replaced with a new one, or in case any of the hands should move improperly, follow the procedure below to reset the STOPWATCH hands to the "0" position.



1. Pull out the crown to the second click.
 2. Press and hold Button A and B simultaneously for 2 seconds or longer.
- * The STOPWATCH second hand turns counter clockwise, and then returns to where it was.
3. Press Button A or B to reset the STOPWATCH second and minute hands to the "0" position.
 - Button A: The hands move counterclockwise.
 - Button B: The hands move clockwise.
 4. Turn the crown to set the time.
 5. Push the crown back in to the normal position.

- * The STOPWATCH minute hand moves correspondingly with the STOPWATCH second hand.
- * The STOPWATCH hands move quickly if the respective buttons are kept pressed.



CAUTION

To replace the batteries, we recommend taking the watch to a local watch repair shop.

Do not expose the old battery to fire or recharge it.

■ CARE OF YOUR LORUS WATCH



WARNING

Please note that there is a risk of serious consequences such as severe injury if the following safety regulations are not strictly observed.

- **Immediately stop wearing the watch in following cases.**

- If the watch body or band becomes edged by corrosion etc.
- If the pins protrude from the band.

※ Immediately consult the retailer from whom the watch was purchased or LORUS SERVICE NETWORK.

- **Keep the watch and accessories out of the reach of babies and children.**

- Care should be taken to prevent a baby or a child accidentally swallowing the accessories.
- If a baby or child swallows the battery or accessories, immediately consult a doctor, as it will be harmful to the health of the baby or child.
- DEATH or serious injury can occur if ingested.
- A swallowed button cell or coin battery can cause Internal Chemical Burns in as little as 2 hours.

● WATER RESISTANT

Condition of use Indication on the dial/ case back	Accidental contact with water, such as splashes and rain	Swimming and taking a shower	Skin diving	Scuba diving
No Indication	NO	NO	NO	NO
WATER RESISTANT	YES	NO	NO	NO
WATER RESISTANT (50M/5 BAR)	YES	YES	NO	NO
WATER RESISTANT (100M/10 BAR or above)	YES	YES	YES	NO

- * If your watch is 200 M/20 BAR, 100 M/10 BAR or 50 M/5 BAR water resistant, it is so indicated on the dial/case back.



CAUTION

- **Do not operate the buttons when the watch is wet.**
- **If the watch is exposed to salt water, rinse it in fresh water and then wipe it thoroughly dry.**
- **Should you find any water or condensation inside the watch, immediately have it checked. Water can corrode electric parts inside the case.**



CAUTION

This watch contains precise electronic components. Never attempt to open the case or remove the back cover.

● LEATHER BAND

- A leather band is susceptible to discoloration and deterioration from moisture, sweat and direct sunlight.
- Wipe off moisture and sweat as soon as possible by gently blotting them up with a dry cloth.
- Do not expose the watch to direct sunlight for a long time.
- Please take care when wearing a watch with light-colored band, as dirt is likely to show up.
- Refrain from wearing a leather band watch other than Aqua Free bands while bathing, swimming, and when working with water even if the watch itself is water-resistant enforced for daily use (10-BAR/20-BAR water resistant).

● PLASTIC BAND

- As for material characteristics, the band is easily dirtied, and may be stained and discolored. Wipe off dirt with a wet cloth or cleaning tissue.
- Unlike bands of other materials, cracks may result in the band being cut. Take care not to damage the band with an edged tool.

● ALLERGIC REACTION

Because the case and band touch the skin directly, it is important to clean them regularly. If not, shirt sleeves may be stained and those with delicate skin may develop a rash. Please wear the watch with some play to avoid any possible allergic reaction. If you develop a rash on your wrist, stop wearing and consult a physician.

● MAGNETISM

Your watch will be adversely affected by strong magnetism. Keep it away from close contact with magnetic objects.

● SHOCKS AND VIBRATIONS

Your watch may be worn for normal sports activities, but be careful not to drop it or hit it on hard surfaces.

● TEMPERATURE

Your watch is preadjusted so that constant accuracy may be insured at normal temperature.

● CLEANING

Use only a soft cloth and clean water for cleaning your watch. Never use chemicals, as the waterproof gasket will corrode.

■ SERVICE

When your LORUS watch requires repair or servicing, please see the enclosed WARRANTY/GUARANTEE.